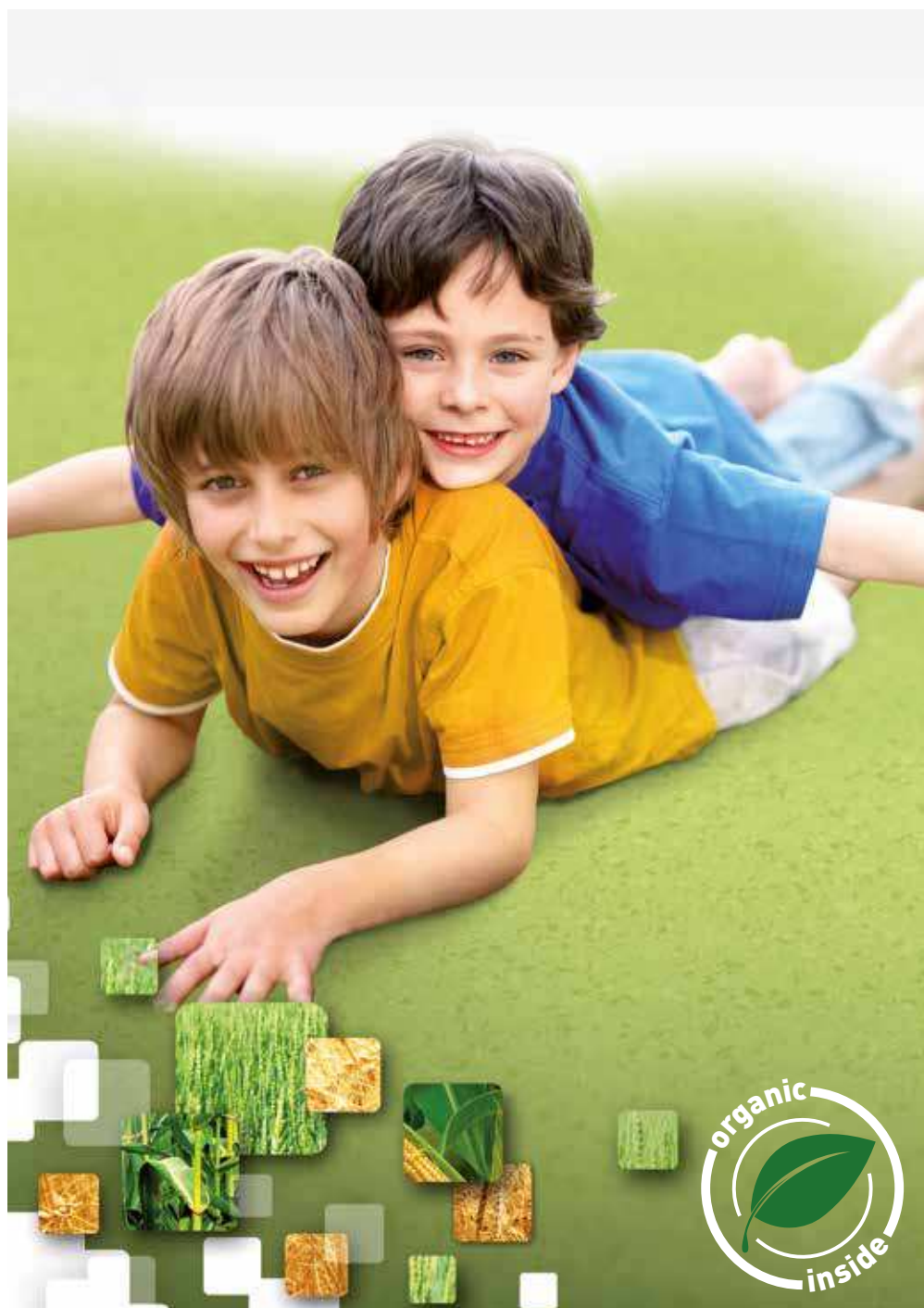


MIPOLAM SYMBIOZ™

gerflor.com



Gerflor[®]
theflooringroup

MIPOLAM SYMBIOZ™



MIPOLAM SYMBIOZ™ is a fully flexible homogeneous compacted floorcovering in sheet, 2m wide, abrasion group T, providing excellent resistance to wear and tear in high traffic areas. Its weight is **2580 gr/m²**.

It features a non-directional design incorporating coloured chips to ensure an even colour throughout the thickness presenting a **nice matt finish**.

MIPOLAM SYMBIOZ™ contains over 75% sustainable or renewable raw materials. It includes a 100% bio based plasticizer, made of residues from cereals (wheat, corn...).

This floorcovering is a non-emissive product (below the level of VOC measurement accuracy).

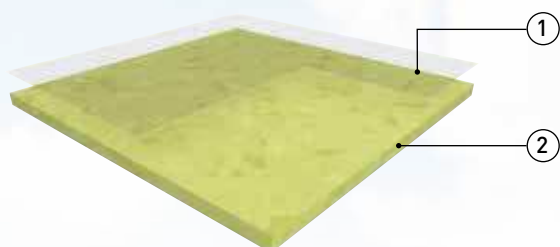
The flooring is equipped with **Evercare™**, patented surface treatment obtained by **UV laser cross-linking** offering the best **chemical resistance to the main products used in healthcare** environment as Betadine, eosin, hydro alcoholic solutions, making the maintenance easy and long lasting the flooring.

This treatment **avoids applying any acrylic emulsion** throughout the lifetime of the product.

The flooring is **antistatic** (<2kV), its residual indentation is ≈ 0.02 mm.

The flooring is a **group T** wear rating suitable for heavy duty traffic areas and **Bfl-s1** fire resistance.

As part of our sustainable development policy, this product is manufactured in the first floor covering plant awarded with the triple certification: ISO 9001 (quality), ISO 14 001 (environment) and OHSaS 18001 (safety).



① **evercare™** treatment

② **Densely compacted surface with 100% bio plasticizer**

EVERCARE™ TECHNOLOGY

AN EXCLUSIVE PATENTED TECHNOLOGY BY GERFLOR

THE BEST CHEMICAL STAIN RESISTANCE SURFACE TREATMENT

<p>Highly Durable: Exclusive surface treatment applied by UV laser cross-linking provides superior durability and an even surface thickness, creating an impenetrable barrier against stains and chemicals found in healthcare.</p> <p>Life expectancy of over 20 years.</p>		
<p>100% non-porous surface: The surface treatment creates a 100% non-porous barrier to all liquids and chemicals, keeping all stains floating on the surface.</p> <p>Simple and easy stain removal.</p>		

STAINING TEST BEFORE CLEANING



Betadine

RESULTS AFTER CLEANING

Using a neutral detergent

	EVERCARE™ TECHNOLOGY	OTHER HOMOGENEOUS SHEET	RUBBER	LINOLEUM	VCT
After 5 minutes					
After 60 minutes					

Stain: **BETADINE® IODINE**

Mipolam Symbioz™



Life

- Highest durability: T group
- Indoor air quality: Very low VOC Emission
- 100% recyclable



RAW MATERIALS

- 75% sustainable or renewable resources
- 100% bio based plasticizer



The lowest
environmental impact
at every stage
of the product life



PRODUCTION

- Made in Germany
- ISO9001, ISO14001 and OHSAS 18001 certified factory
- 100% post manufacturing wastes recycled

INSTALLATION

- Highly flexible homogeneous flooring
- Easy to install & weld
- Welding rod: 100% bio based plasticizer

TRANSPORT

- Product weight 20% lower than standard product
- All raw materials available within 350 km from production site

MIPOLAM SYMBIOZ™



6027 Acacia

NCS: 2040-G80Y
LRV: 44,6



6007 Garden

NCS: 2030-G50Y
LRV: 57,5



6006 Blue Sky

NCS: 2020-B
LRV: 50,3



6017 Grass

NCS: 2020-G10Y
LRV: 42,0



6016 Sea Blue

NCS: 3040-R90B
LRV: 30,5



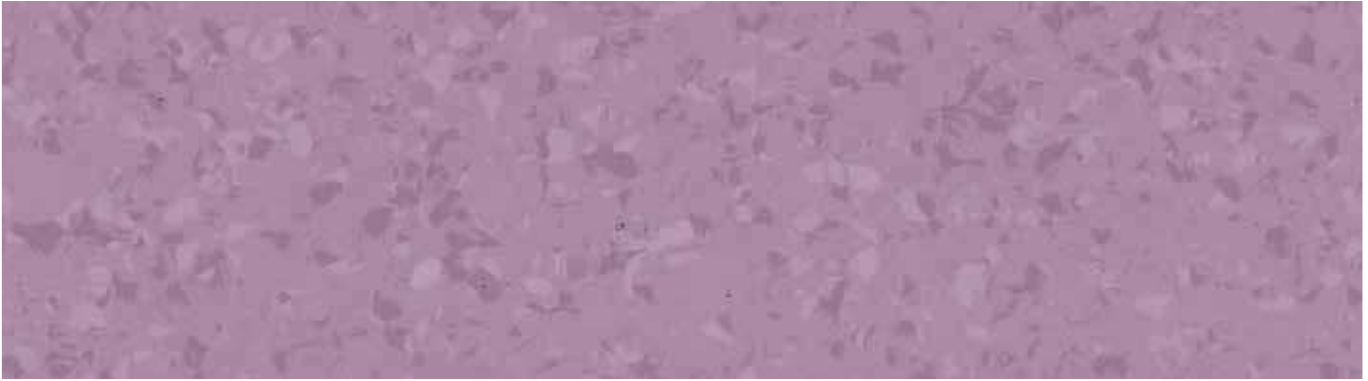
6037 Lagoon

NCS: 4030-B30G
LRV: 28,2



6046 Blue Night

NCS: 4050-R80B
LRV: 10,6



6048 Lavender

NCS: 4020-R30B
LRV: 23,0



6055 Tomato

NCS: 3050-Y90R
LRV: 14,9



6035 Sunset

NCS: 2050-Y60R
LRV: 33,1



6032 Sunshine

NCS: 1040-Y10R
LRV: 55,4

MIPOLAM SYMBIOZ™



 2 m	T	EVERCARE™	 100% recyclable
--	---	-----------	---



6029 Cloud

NCS: 4500-N
LRV: 32,5



6059 Black Diamond

NCS: 8500-N
LRV: 5,8



6010 Mist

NCS: 2502-Y
LRV: 47,8



6044 Sea Storm

NCS: 6502-Y
LRV: 15,7



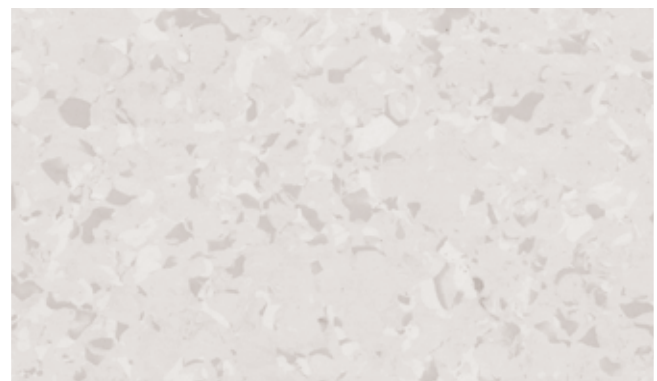
6009 Grey Stone

NCS: 2500-N
LRV: 52,4



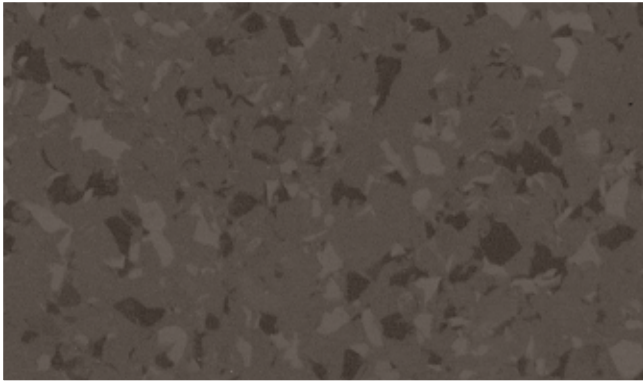
6039 Pebble

NCS: 4000-N
LRV: 32,0



6008 Calico

NCS: 1502-R
LRV: 66,1



6045 Chocolate

NCS: 7005-Y80R
LRV: 9,3



6034 Mole

NCS: 4010-Y30R
LRV: 33,5



6043 Wood

NCS: 5005-Y50R
LRV: 24,3



6004 Sandstone

NCS: 2020-Y20R
LRV: 56,1



6041 Clay

NCS: 3005-Y50R
LRV: 40,0



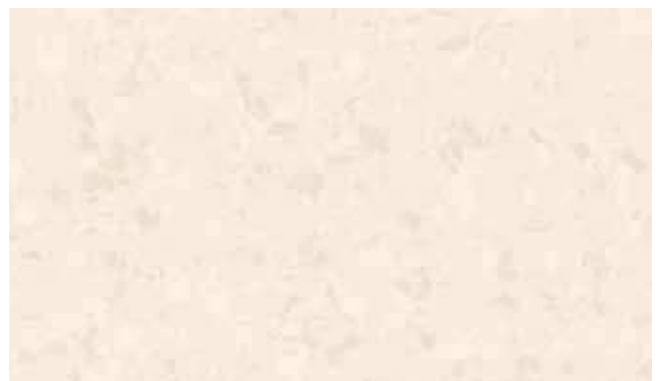
6003 Linen

NCS: 2010-Y10R
LRV: 58,7



6031 Breeze

NCS: 2005-Y40R
LRV: 48,5



6001 Cotton

NCS: 1005-Y50R
LRV: 73,1

MIPOLAM SYMBIOZ™

DESCRIPTION

Total thickness	EN ISO 24346 [EN 428]	mm	2.00
	ASTM F386-02	inch	0.08
Weight	EN ISO 23997 [EN 430]	g/sq.m	2580
Width/length of sheet	EN ISO 24341 [EN 426]	cm / lm	200/20
	-	feet - inch	6'6" / 66'
Coverage / roll	-	sq.ft	430.56
	-	sq.m	40

CLASSIFICATION

Norm/product specification	-	-	EN ISO 10581 [EN 649]
	ASTM F 1913-04	-	compliant
European classification	EN ISO 10874 [EN 685]	class	34-43
Fire rating	EN 13501-1	class	Bfl - s1
	ASTM E648-08	class	Class I
	CAN/ULC S102.2	-	tested in accordance
Static electrical propensity	EN 1815	kV	< 2

PERFORMANCES

Wear resistance	EN 660.2	mm ³	≤ 2.0
Wear group	NF 189	group	T
Type binder content	ISO 10581	type	I
Dimensional stability	EN ISO 23999 [EN 434]	%	≤ 0.40
Impact sound insulation	EN ISO 717-2	dB	5
Residual indentation	EN ISO 24343-1 [EN 433]	mm	~ 0.02
Castor chair test [Type W]	ISO 4918 [EN 425]	-	OK
Thermal conductivity	EN ISO 10456 [EN 12 524]	W/[m.K]	0.25
Colour fastness	EN 20 105 B02	degree	≥ 6
Surface treatment	-	-	Evercare™
Chemical products resistance	EN ISO 26987 [EN 423]	class	OK
Anti-bacterial activity [E. coli - S. aureus - MRSA]*	ISO 22196	-	> 99 % inhibits growth

ENVIRONMENT/INDOOR AIR QUALITY

TVOC after 28 days	ISO 16000-6	µg/ m ³	< 10
Certification	-	-	Floorscore®

CE MARKING

CE	EN 14041	-	
	-	-	

* The implementation of an effective cleaning method is the best defence against infection

Product description and technical data sheet available in various languages. See our Gerflor Country websites.

Installation and Maintenance Guidelines, Complementary ranges available on our Gerflor website.



Rubber leaves indelible stains on vinyl floorings: do not use mats with rubber backing and replace tubular furniture feet with those made of PVC or polyamide. Place mats of sufficient length at entrances to reduce outside sources of dirt.

IMPORTANT: The information contained in this document is valid from 01/05/2018 and is subject to change at any time without notice. In the context of constantly changing technology, our customers are responsible, prior to any use, for checking with us that this document is the version in force.

MIPOLAM SYMBIOZ, LESS SPEAKING FOR MORE ACTIONS

<p>COMPOSITION 100% REACH 100% bio based plasticizer</p>	<p>INDOOR AIR QUALITY 100 times lower than norms requirements (TVOC < 10ug/m³ after 28 days)</p>	<p>RECYCLED CONTENT 25%</p>	<p>RECYCLABILITY 100%</p>	<p>LCA Eco-designed according to a product specific life cycle analysis</p>	<p>WELLNESS Walking comfort: < 75 dB</p>
---	---	--	--------------------------------------	--	--

Be connected!



#Gerflor



www.gerflor.com